



Spotter Guide to

Seattle-Tacoma International Airport (SEA/KSEA)



Photos: Andreas Mowinkel

Frequencies

119.900	Tower
239.300	Tower
121.700	Ground
126.250	Ground
128.000	Clearance Delivery
126.250	Gate Control
118.000	ATIS
122.950	UNICOM
121.500	Emergency

Class B approach/departure control

119.200 / 284.70
120.100 / 290.90
120.400 / 269.13
125.600 / 273.45
125.900 / 290.90, 338.20
126.500 / 391.90

Company frequencies

131.750	Aeroflight Executive Service
129.000	Air Canada
129.900	Air Canada
130.175	Air Canada
130.475	Air Canada
130.800	Air Canada
130.900	Air Canada
131.175	Air Canada
131.200	Alaska Airlines (inbound)
130.875	Alaska Airlines (outbound)
130.925	America West Airlines
129.225	American Airlines
128.925	ASIG
130.050	British Airways
129.725	Cargolux
129.375	Casino Express
129.925	Continental Airlines
130.100	Delta Airlines

131.625	DHL
131.925	Empire Airlines
131.425	EVA Air
131.725	Evergreen Air
130.825	Frontier Airlines
129.325	Horizon Airlines
130.725	Horizon Airlines (inbound)
131.350	Horizon Airlines
130.250	Kitty Hawk
131.700	Northwest Airlines
128.925	Scandinavian Airlines
131.050	Skywest Airlines/United Express
128.825	Slattery Ground Services
130.850	Southwest Airlines
130.450	Swissport
129.500	United Airlines
131.150	US Airways
130.450	World Airways

Spotter sites

There are two prime spotting sites around Sea-Tac. For photography, these sites work best in the morning and early afternoon, due to the location of the sun.

A North Seatac Park

If traffic arrives on Runway 16, use this location. This is a park by a big watertank, located on 24th Avenue S, next to the employee parking lot. There is a possibility of some light police curiosity at this site, however I have never had any problems.

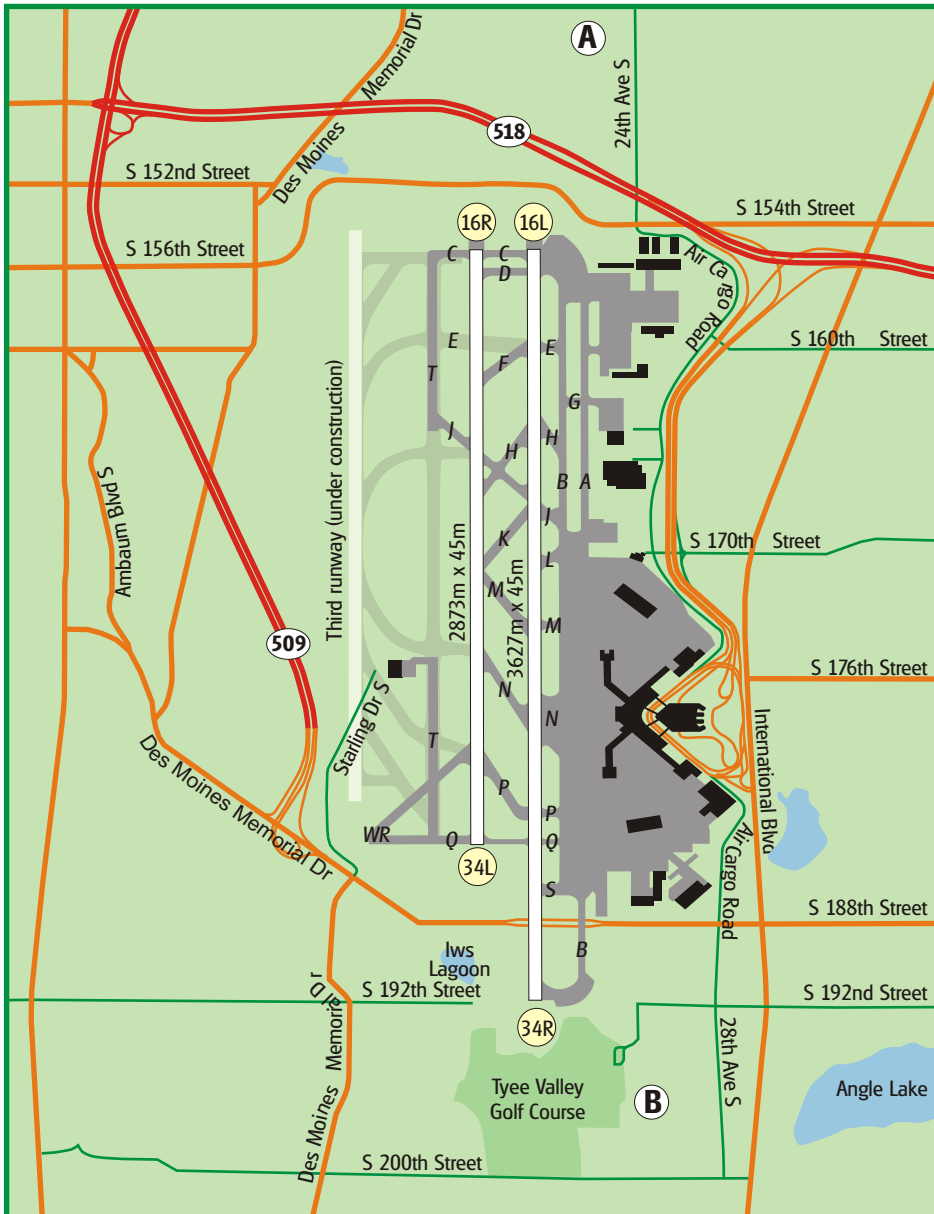
B Ballpark

If traffic arrives on Runway 34, use this location. This is a small ballpark located next to the FAA training center off 28th Ave S. This runs parallel with Highway 99/ International Blvd.

Earlier there were good spots at Starling Dr S, but since the work on the third runway started these spots are now unavailable (closed just north of the GA terminal).

It is possible to spot from inside the terminal, but these spots are only available after having passed security (airside).

© 2006 PLANE-SPOTTER.com



SEA facts 2005

Movements	341,470
Passengers	29,289,026
Freight (metric tons)	338,591